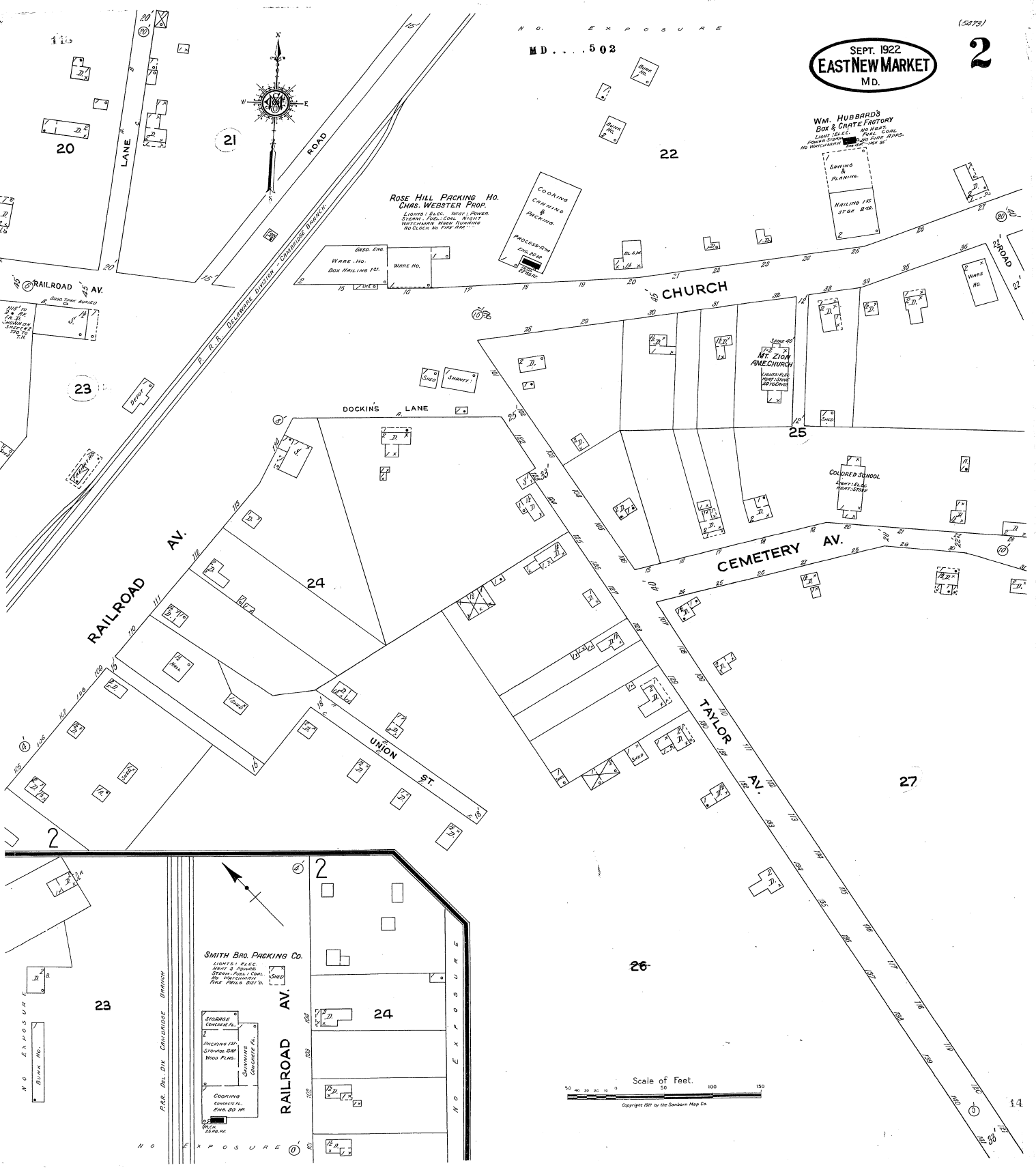


N O . E X P O S U R E  
M D . . . . 5 0 2

SEPT. 1922  
**EAST NEW MARKET**  
M.D.

(5473)  
**2**



**ROSE HILL PACKING HO.**  
CHAS. WEBSTER PROP.  
LIGHTS - ELEC. - HEAT - POWER  
STEAM - FUEL - COAL - WAGERS  
WATER - WASH - RUNNING  
NO ELEVATOR - NO FIRE ALARMS

**WM. HUBBARD'S**  
BOX & CRATE FACTORY  
LIGHTS - ELEC. - HEAT - POWER  
STEAM - FUEL - COAL - WAGERS  
WATER - WASH - RUNNING  
NO ELEVATOR - NO FIRE ALARMS

**MT. ZION**  
AME. CHURCH  
LUMBER - FILL - HEAT - STEAM - WAGERS

**SMITH BRO. PACKING CO.**  
LIGHTS - ELEC. - HEAT - POWER  
STEAM - FUEL - COAL - WAGERS  
WATER - WASH - RUNNING  
NO ELEVATOR - NO FIRE ALARMS

Scale of Feet.  
0 50 100 150  
Copyright 1919 by the Sanborn Map Co.